



Safety Covers For Swimming Pools  
Since 1975



## Year 1972

It all began in 1972 when Siv. Ing. Harald Einevoll started developing environmental and safety products in Norway.

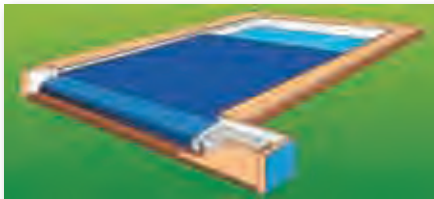
He installed the first safety cover on a swimming pool in 1975. This was followed by the opening of the 'Technology Centre' a few years later. Throughout this time he has continued to improve and develop the PoolLock Safety Cover for swimming pools.

Today, PoolLock is recognised as the best safety cover on the market.

## V5 System

This is PoolLock's latest innovation. The PoolLock V5 Safety Cover has been developed with a focus on:

- Modern low-cost production
- A modular system for low-cost distribution
- Easy and simple assembly, installation and service



V5 – A new generation of Safety Covers

## History



Our Development and Technology Centre – since 1972.



1992 – V3 safety cover in Norway. Still working well.

## Hi-tech Production

Production using hi-tech machinery and modern methods enable us to achieve a high quality with low costs.



1994 – V4 safety cover in Switzerland. Still working well.



2004 – Alexandra Hotel, Norway (24 x 11 m).



## Why the PoolLock Safety Cover is the best on the market

### PoolLock Hydraulic System

PoolLock Automatic Safety Covers are manufactured using only their own unique Hydraulic Systems. Two hydraulic 'direct drive' motors open and close the cover:

- The strength and reliability of hydraulic systems have been well known for more than 100 years;
- PoolLock has developed an 'Easy-Drive' hydraulic system which has proven its quality and suitability over the last 20 years on more than 7,000 installations.

### Important Facts

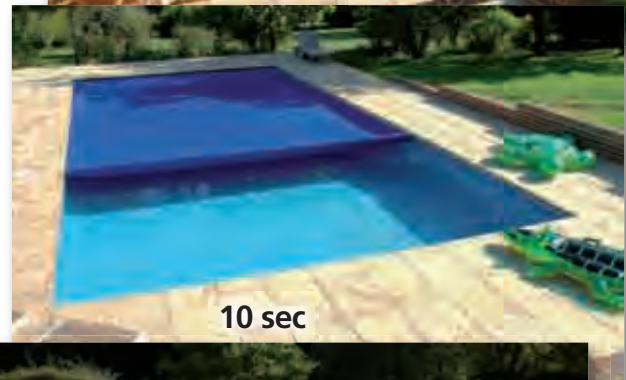
- No electricity required near the pool (many countries do not allow electricity in or around the pool);
- The PoolLock Hydraulic drive system can be easily adjusted to the force and speed required;
- The PoolLock Hydraulic drive system is not sensitive to water. It needs very little maintenance and will probably last as long as your pool.

### PoolLock Hydraulic Drives

Two important PoolLock components which have proven their reliability over the past 20 years.



## Fast and Easy to Open and Close



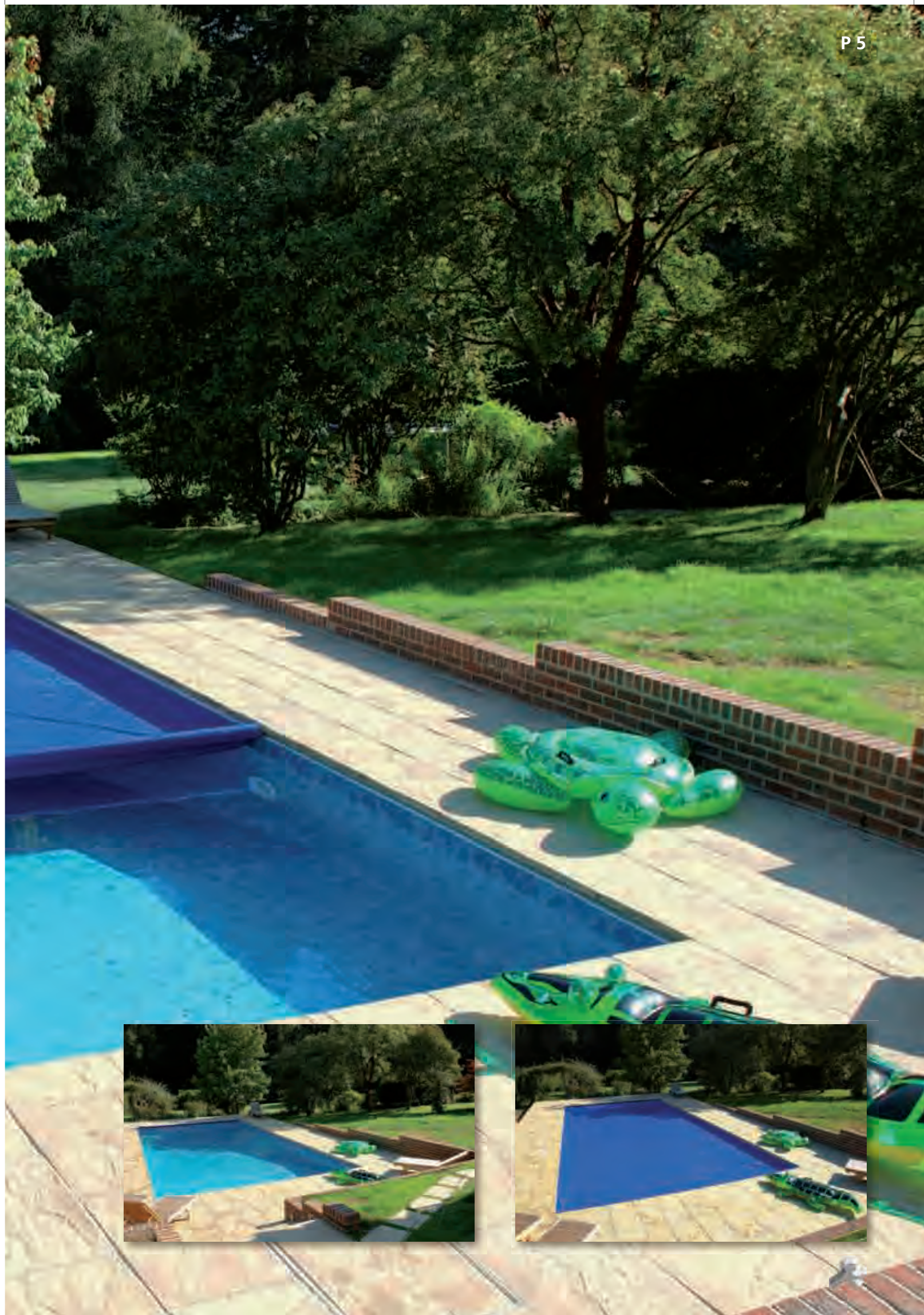
Turn this page to see the result of many years of development:













## PoolLock Safety Covers: How do you want yours?

### Tailor-made Safety Cover

V3 and V4 safety covers are tailor-made, fully-automatic and powered by the unique PoolLock Hydraulic system. PoolLock offers a wide range of solutions to fit any pool and to comply with almost any requirement you may have.

Thousands of V3 and V4 systems have been installed over the past 20 years, which in itself is proof of their quality and popularity.

The V4 system can be made in any size up to 25 x 11 m. PoolLock are specialists in the design and installation of tailor-made safety pool covers – both big and small, for indoor as well as outdoor swimming pools.



Tailor-made PoolLock Safety Cover on a specially-designed pool. Installed in 2002 and still working well.



Tailor-made PoolLock Safety Cover for a free-form pool. Installed in 2003 and still working well.

### Technical Advice

PoolLock can advise you on the best solution for your pool.

Over the years, we have acquired a lot of valuable practical experience and knowledge to make safety covers to meet your requirements. We can discuss ideas and technical solutions with you in English, German, French, Italian, Norwegian, Czech, Swedish and Russian.

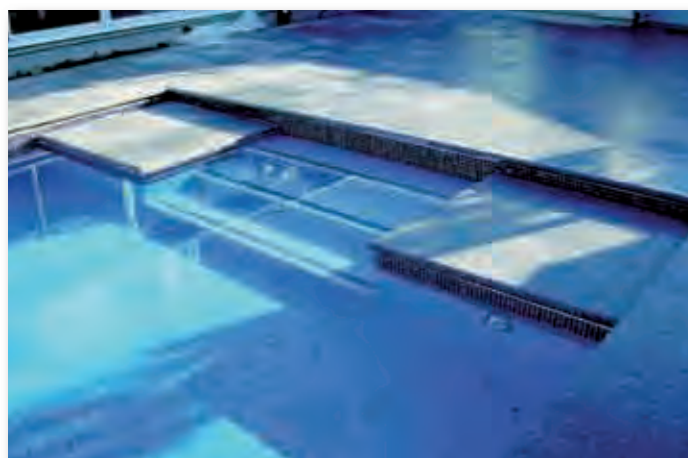


### Advantages of the PoolLock Automatic Cover

PoolLock Integrated System – pool size: 19 x 6.5 m opens and closes in 35 seconds.

- Key-operated to prevent unauthorised use;
- Provides maximum safety at all times;
- Saves water by reducing evaporation;
- Extends the life of the building by reducing humidity;
- Reduces the amount of chemicals required to keep the water clean;

PoolLock meets design as well as functionality requirements.



Tailor-made PoolLock Safety Cover for a free-form pool. Installed in 2003 and still working well.

## Support for Architects

### Support for Architects and Builders

Our technical staff can provide architects and builders with drawings and technical details.

We can discuss ideas and technical solutions with you in English, German, French, Italian, Norwegian, Czech, Swedish and Russian. Over the years, we have acquired a lot of valuable practical experience and knowledge to make safety covers according to your desires.

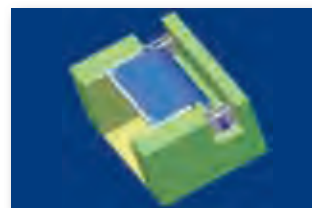
### Integrated Safety Cover

PoolLock offers solutions to integrate the safety cover into the pool construction.

We can provide architects with technical and practical information, as well as details on working solutions.

Our wide range of alternative solutions gives architects more architectural freedom regarding the size and design of the swimming pool.

The PoolLock "Easy-Drive" 3 HP Hydraulic System can be used for cover sizes up to 25 x 11 m.



V5 Modular System



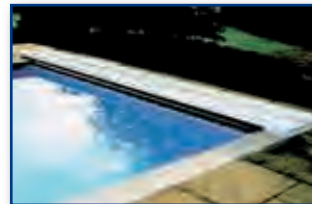
Hidden Mechanism



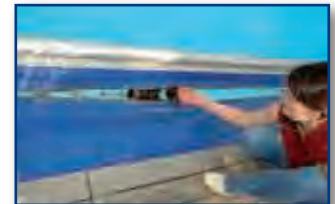
Opening Process



Open



Retrofit. Complete Hidden Mechanism



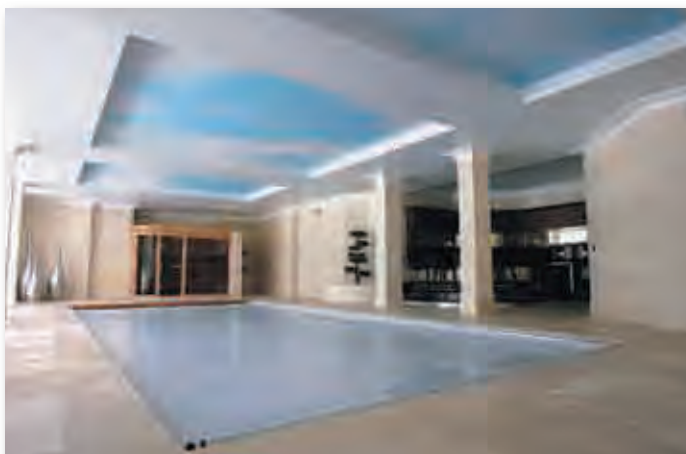
PoolLock Leaf Catcher



Detail of System



Round Corner



**PoolLock is Fast  
and Easy to operate**

**Close – Lock – Open**

Opens and closes in 20 to 30 Sec.  
Taking out the key prevents  
Unwanted operation of the Cover







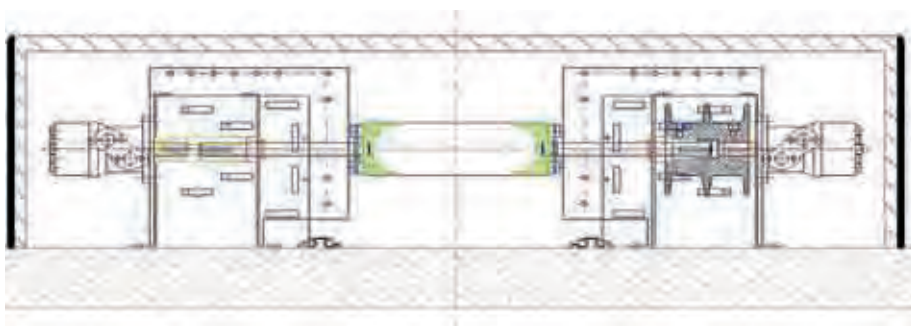






## V5 Automatic

## Why PoolLock can make high-quality safety covers at lower cost



### PoolLock V5 Production System

The V5 system has been developed to be manufactured with modern and effective production methods on efficient, hi-tech production lines. This has enabled PoolLock to reduce manufacturing costs while still maintaining high quality.

Thanks to the technical knowledge acquired through many years of experience, we have been able to manufacture the V5 system according to PoolLock's recognised quality standards.



### V5 System – The Best Value for Money

V5 System is PoolLock's latest innovation.

It is available in a **fully-automatic version** with hydraulic drive system, as well as in an easy-to-operate **manual version**.

The V5 Automatic and V5 Manual systems are the most cost-effective safety covers on the market.



### V5 Automatic

Fully-automatic with hydraulic drive system. Easy to install on existing swimming pools.

V5 Automatic can be delivered with three types of **safety tracks**: Top Track, Flat Track and In-wall Track. All three are made from anodised and extruded aluminium. The Flat Track is dropped into the patio and is totally flush with the ground or the floor. The hydraulic drive system can be mounted on top of the patio or in a pit behind the pool. The top-mounted drive unit can be supplied with a bench.

The V5 Automatic integrated solution comes with a special pocket profile for easy maintenance. The in-ground drive system can be supplied with a lid, which has also been designed for easy cleaning and servicing. V5 Automatic can be delivered in all sizes up to a maximum of 14 x 6.5 m.





## PoolLock has made an easy-to-operate and cost-efficient Manual Safety Cover

### V5 Manual



The special PoolLock 'Easy-Glide' system makes it quick and easy for one person to operate the V5 Manual Safety Cover. The cover is opened using a crank and closed by pulling a rope.

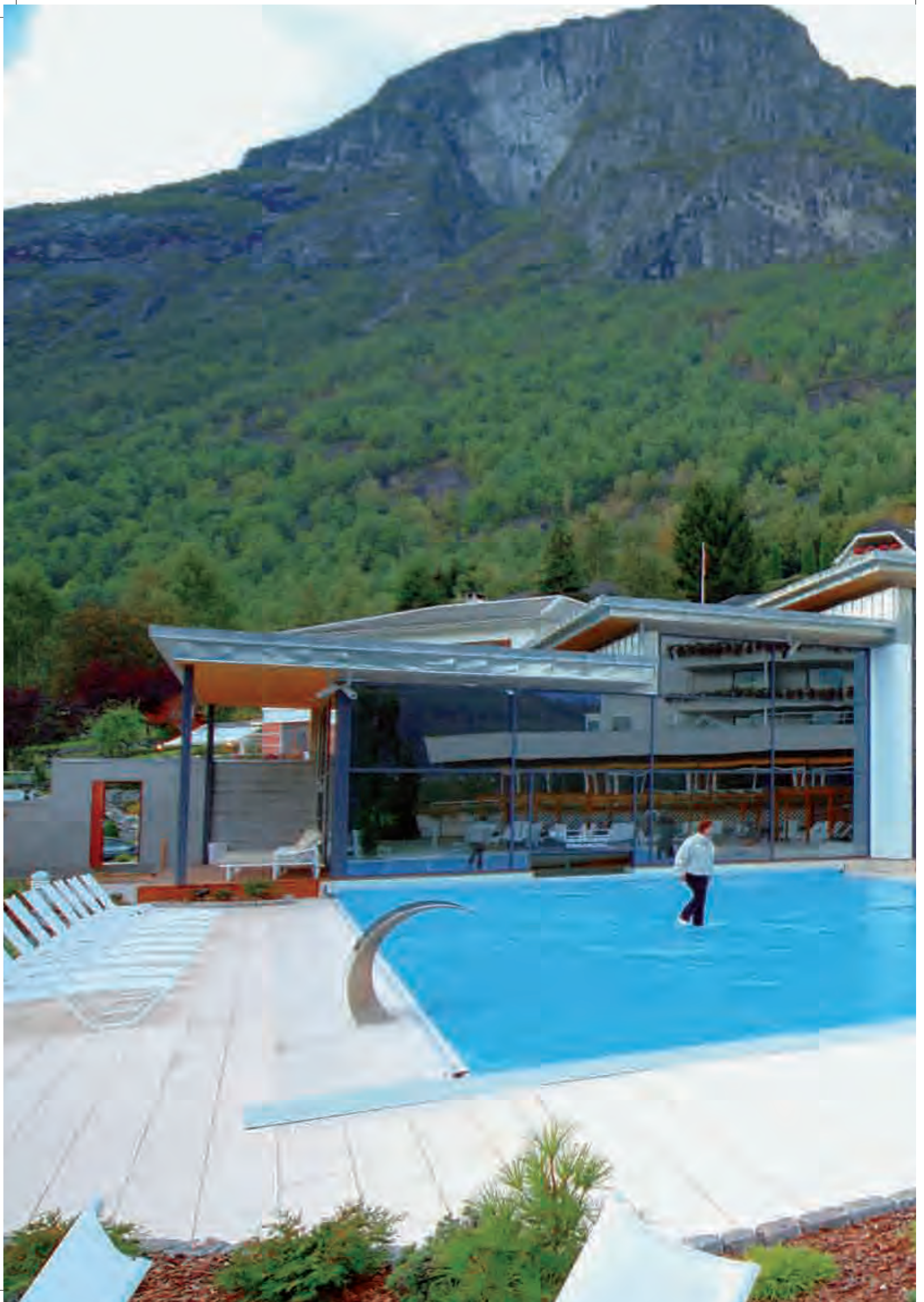
V5 Manual can be delivered with one or two cranks. The two-crank version is used on larger covers for extra easy opening.

V5 Manual can be delivered with two types of safety tracks: Top Track or Flat Track, both in anodised and extruded aluminium. The Flat Track is dropped into the patio and is completely flush with the pool surrounding.

V5 can be delivered in all sizes up to a maximum of 13 x 6 m.







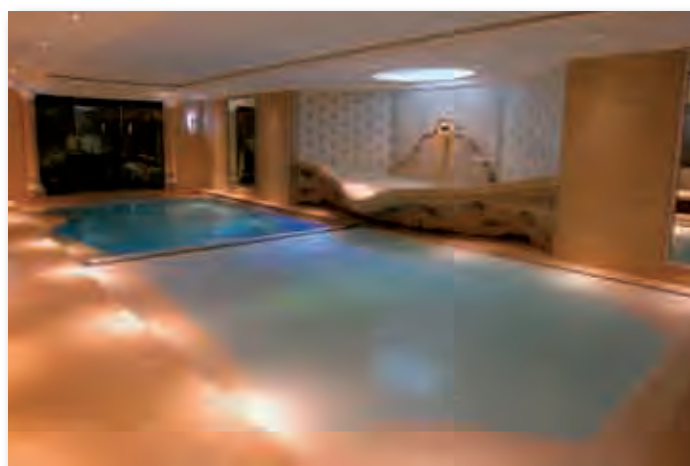
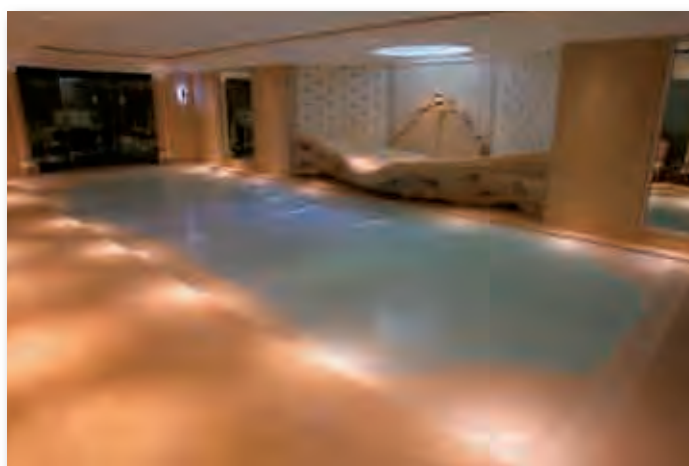


**Hotel Alexandra**

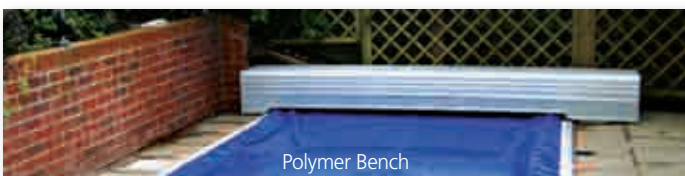
PoolLock Safety Cover in the Alexandra Hotel, Norway (size: 24m x 11m). Installed in 2004. The pool is used all year round at a water temperature of +33 C even with an outside air temperature in winter of - 35 C.





















## Colours



Available colours for V3, V4 and V5

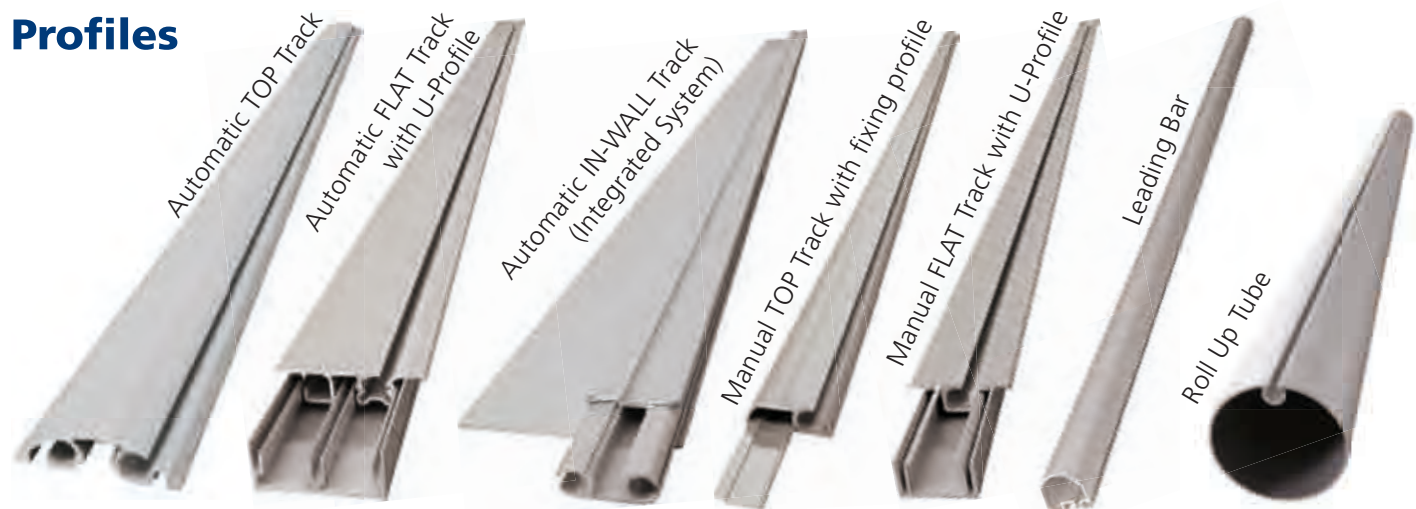


Available colours for V4





## Profiles



## V5 Automatic Mechanism

### With Dual Hydraulic Drive System

TOP Track

FLAT Track

INWALL Track



## V5 Manual Mechanism

TOP Track

FLAT Track

Available in 1-crank  
or 2-crank system



## Abbreviated Specifications

Models	Fully-automatic with Dual Hydraulic Power System					Manual
	V3	V4.2	V4.3	V4.4	V5	V5
1. Max Cover Length – TL	13 m	14 m	20 m	25 m	14 m	13 m
2. Max Cover Width – TT	6.5 m	8 m	8 m	11 m	6.5m	6 m
3. Standard Power Pack	750 W	1500 W	1500 W	2200 W	750 W	--
4. Standard Average Speed	14 m/min	20 m/min	22 m/min	35 m/min	10 m/min	20 m/min
5. High Speed Power Supply	24 m/min	30 m/min	32 m/min	--	20 m/min	--
6. X-High Speed Power Supply	--	38 m/min	40 m/min	--	35 m/min	--
7. Drive System: Hydraulic direct drive	2HD	ORB-2HD	ORB-2HD	ORB-2HD	2HD	1/4 gear
8. Hydraulic Motor Sizes	200 cm <sup>3</sup>	315 cm <sup>3</sup>	315 cm <sup>3</sup>	400 cm <sup>3</sup>	200 cm <sup>3</sup>	--
9. Hydraulic Hose System	2 Hoses	2 Hoses	2 Hoses	2 Hoses	3 Hoses	--
10. Hydraulic pressure	2-7 Mpa	2-8 Mpa	2-8 Mpa	2-8 Mpa	2-7 Mpa	--
11. Max. Hydraulic pressure	8 Mpa	9.5 Mpa	9.5Mpa	9.5 Mpa	8 Mpa	--
12. Max. friction allowed	125 kg	150 kg	175 kg	175 kg	125 kg	50 kg
13. Available with TOP Track	Yes	Yes	Yes	Yes	Yes	Yes
14. Available with FLAT Track	Yes	Yes	Yes	Yes	Yes	Yes
15. Available with IN-WAL Track	Yes	Yes	Yes	Yes	Yes	No
16. Available Leading Bar w. "Skirt"	Yes	Yes	Yes	Yes	--	No
17. Cover: Double Reinforced 480 gr/m <sup>2</sup>	--	--	--	--	Yes	Yes
18. Cover: Double Reinf. Antigrease 680 gr/m <sup>2</sup>	Yes	Yes	Yes	Yes	--	--
19. Thickest Cover Material Available	850 g/m <sup>2</sup>	850 g/m <sup>2</sup>	850 g/m <sup>2</sup>	680 g/m <sup>2</sup>	680 g/m <sup>2</sup>	680 g/m <sup>2</sup>
20. Life durability of the safety cover (number of operations)	5000	7500	5000	3000	5000	3000
21. Double Ball Bearing SS316w	Yes	Yes	Yes	Yes	Yes	Yes
22. Standard colour	7	8	8	8	4	4
23. Special colour available	--	Yes	Yes	Yes	--	--
24. Cover vertical load (Point)	200 kg/m <sup>2</sup>	200 kg/m <sup>2</sup>	200 kg/m <sup>2</sup>	200 kg/m <sup>2</sup>	200 kg/m <sup>2</sup>	200 kg/m <sup>2</sup>
25. Total vertical load (Over all)	1500 kg	1500 kg	1500 kg	1500 kg	1500 kg	1500 kg
26. Diameter of aluminium roll-up tube	152 mm	203 mm	203 mm	305 mm	100 mm	100 mm
27. Skew Adjustment	Yes	Yes	Yes	Yes	Yes	Yes















Safety Covers For Swimming Pools  
Since 1975



*Be Safe – Be Happy*

